

Growing philanthropy



person



family



business

at a time.

INSIDE

- 2** Message to Our Community
- 3** 2017 Year in Review
- 4** Vision, Mission, and Our Role
- 5** 2017-2020 Strategic Plan
- 6** 10 Reasons to Give Through CFAAC
- 7** 2018 Board of Trustees
- 8** Committees
- 9** One Person
- 10** Funds
- 13** 2017 Grantmaking
- 14** Grant Spotlight
- 16** One Family
- 17** 2017 Grantees
- 20** Programs
- 22** Community Leadership Circle
- 23** One Business
- 24** Celebration of Philanthropy
- 25** Financial Summary
- 26** Ways to Give
- 27** Our Team

Message to Our Community

We know that each ONE of us makes a difference. That is why we are focused on growing philanthropy one person, one family, and one business at a time. The Community Foundation of Anne Arundel County (CFAAC) exists today because of the compassionate and optimistic people who in 1998 believed in the power of philanthropy to inspire the future. As we move into our 20th year, we are motivated by the enthusiasm and generosity of our donors and community partners who are making our county better today than it was yesterday.

2017 was a significant year for CFAAC and as a result, we are stronger than ever. We embarked on our new strategic plan; increased our total assets from \$9.5 million to nearly \$15 million; distributed \$2.3 million to nonprofits doing outstanding work in our community; and awarded 14 scholarships to well deserving high school seniors to help them pursue their dreams.

We were awarded a \$300,000 challenge grant to begin building our first strategic grants program, the Fund for Anne Arundel. And, thanks to our Community Leadership Circle donors, we are proud to announce that we exceeded our multi-year operating campaign goal, helping to ensure long-term viability of the organization.

We continued to strengthen our internal infrastructure through new accounting, fundraising, and online grantmaking software. We expanded our community leadership efforts by launching the Community Impact Speaker Series focused on providing access to expert resources and encouraging conversation about important county issues. And, we partnered with the Anne Arundel County Executive's Office to open nine designated funds that accept private donations to county departments and agencies for important county projects.

Thanks to the donors listed in the pages that follow, CFAAC has touched the lives of thousands and remains focused on both the immediate and long-term needs of Anne Arundel County residents.

We will continue to strive to be an influential catalyst for innovative ideas and community problem-solving via philanthropy, but we can't do it alone. We need everyONE! Thank you for devoting your time, talent, and financial resources to ensure we are helping to make Anne Arundel County a stronger, even better place to call home. The more of us who give the more good we can do for our community, together.

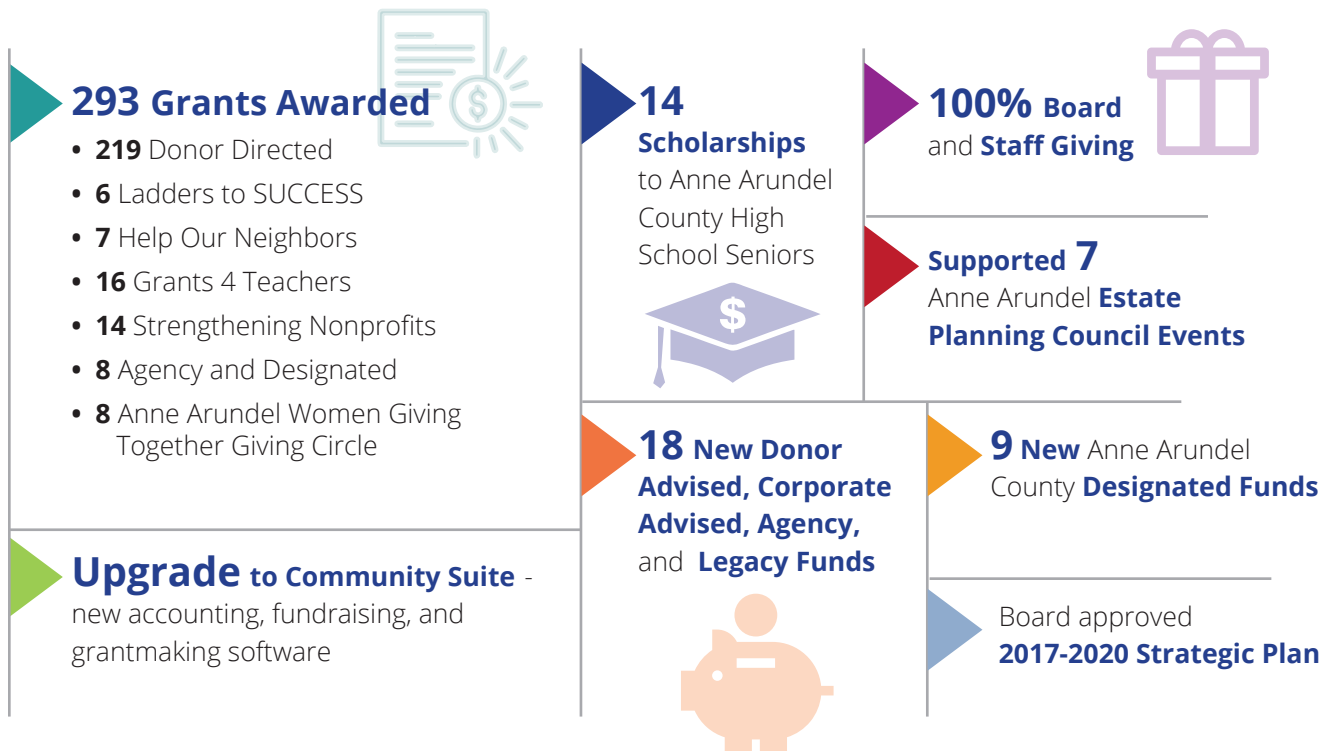
With gratitude,



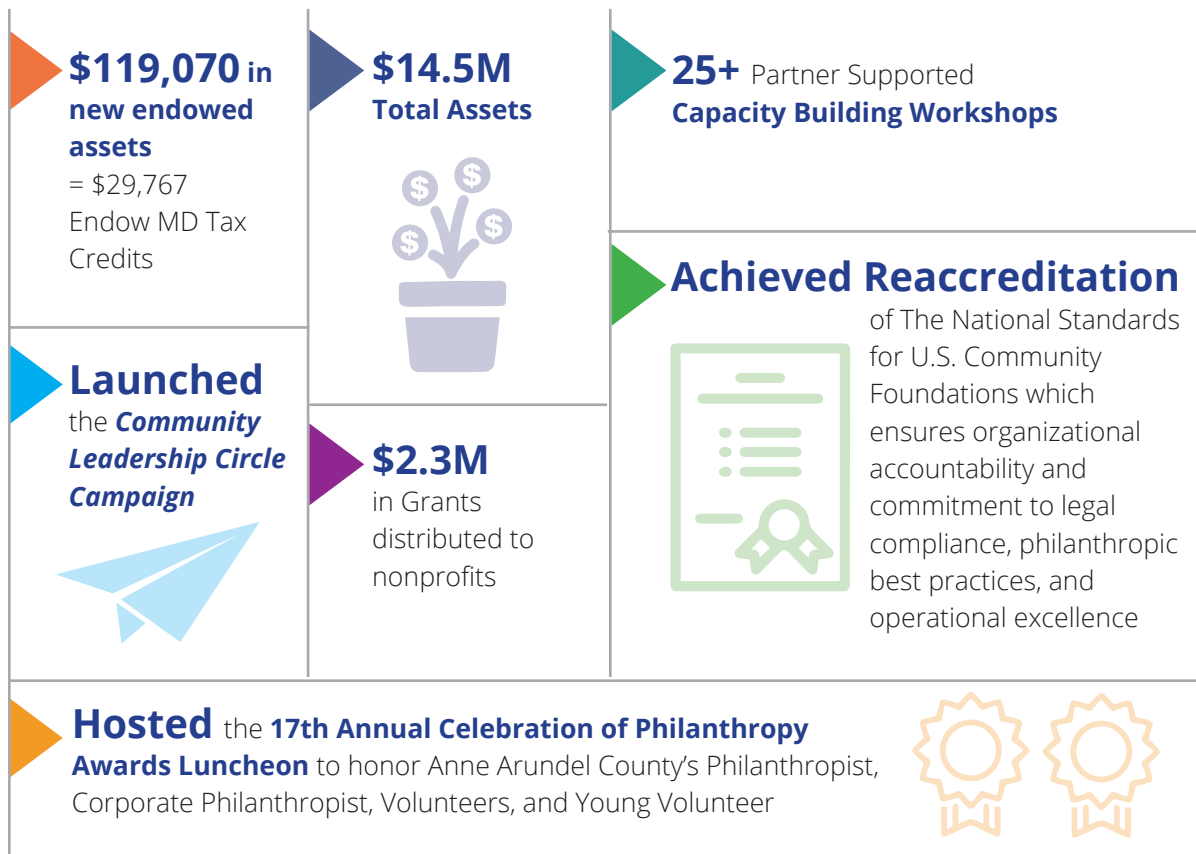
Kathleen P. Brooks,
2017 Board Chair



Melissa H. Curtin,
President & CEO



2017 Year In Review



VISION

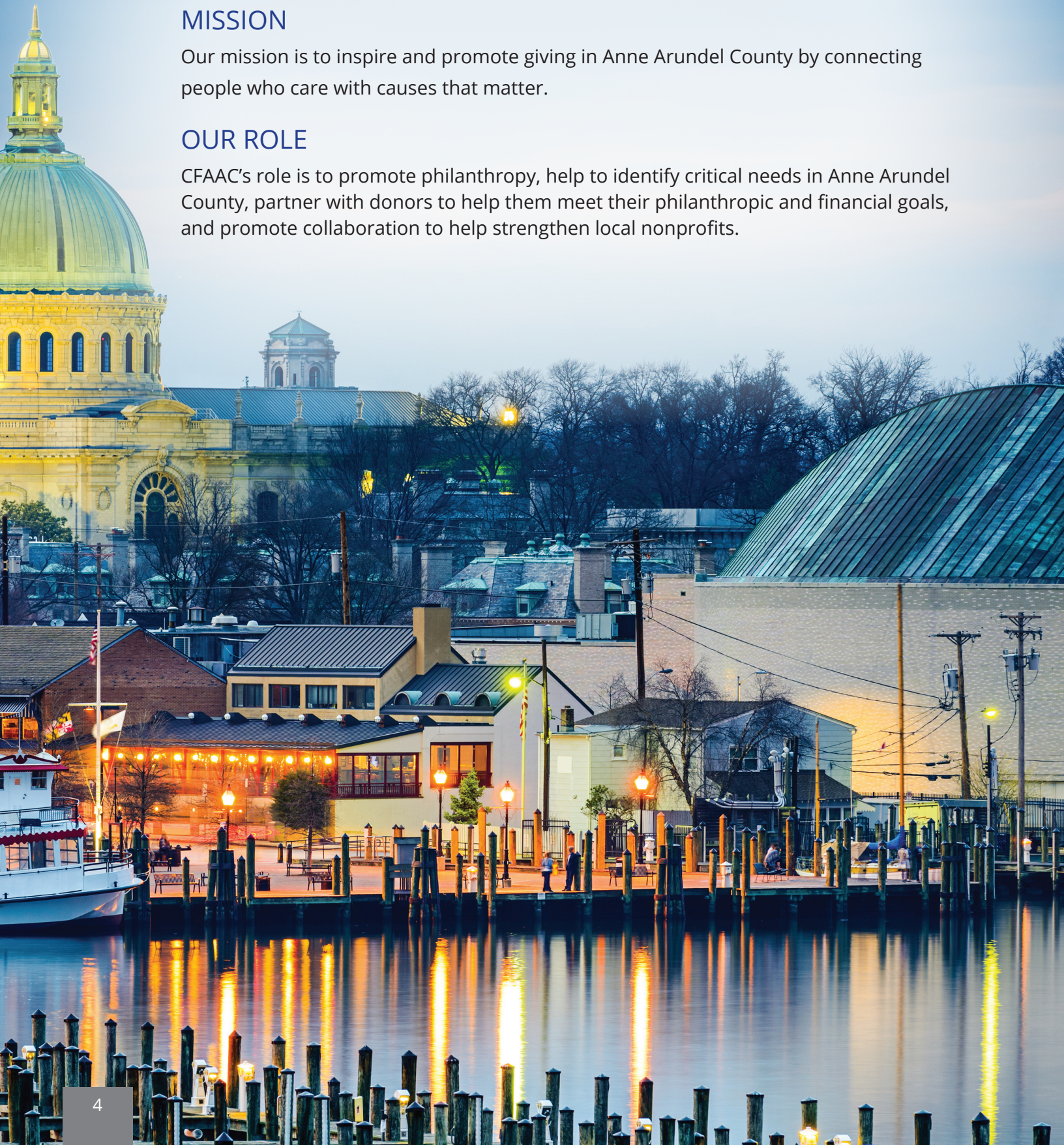
We envision a vibrant and generous community that comes together to enhance the quality of life for all.

MISSION

Our mission is to inspire and promote giving in Anne Arundel County by connecting people who care with causes that matter.

OUR ROLE

CFAAC's role is to promote philanthropy, help to identify critical needs in Anne Arundel County, partner with donors to help them meet their philanthropic and financial goals, and promote collaboration to help strengthen local nonprofits.



Strategic Plan for 2017 – 2020

The Community Foundation of Anne Arundel County recognizes the power of philanthropy to transform communities. Over the past 19 years, we have become the largest institutional funder in Anne Arundel County by awarding over \$12 million in grants and scholarships.

Planning for the future the best we can is crucial. As local, state, and federal funding continues to decline, private donors are called on to fill in the gaps. We have more opportunity than ever to develop partnerships that yield real solutions to seemingly intractable societal challenges. We believe that the priorities identified here will help to make a difference in strengthening communities and improving the quality of life for all residents in Anne Arundel County.

In addition to the traditional fund management and grant distribution services provided by community foundations, this plan acknowledges and defines our community leadership efforts that go above and beyond providing high-quality philanthropic services. It further positions us as a convener of service providers, a thought partner, an advocate for local nonprofits, and a catalyst for innovative ideas and community problem-solving.

Below are our key strategic priorities; view the entire 2017-2020 Strategic Plan at www.cfaac.org.



10 Reasons to Give Through the Community Foundation

1

We help people invest in the causes they care about most.

2

We provide highly personalized service tailored to individual philanthropic and financial interests.

3

Our professional staff has broad expertise about community issues and needs.

4

We partner with professional advisors to create highly effective approaches to philanthropic giving.

5

We accept a wide variety of assets and can facilitate even the most complex forms of giving.

6

We offer maximum tax advantage for most gifts under federal law.

7

We are a local nonprofit with deep roots in the community.

8

We multiply the impact of gifts by pooling them with other contributions and grants.

9

We build endowment funds that benefit the community forever.

10

We are a catalyst for new ideas and community problem-solving.



2018 Board of Trustees

Pictured left to right: **Back Row:** Carl Gutschick, Jim Humphrey, Greg Strott, Renee Kremm, Anne Hamel, John A. Rosso, Jr., David Mitchell, Paul Serini, Esq., Jim Nolan. **Front Row:** Jenny Kottler, Sonja Swygert, Kathleen Brooks, Cindy O'Neill

Chair

Jim Nolan

Director, Council, Baradel, Kosmerl & Nolan, P.A.

Immediate Past Chair

Kathleen Brooks

Branch Vice President, Coldwell Banker

Vice Chair

Greg Strott

Community Volunteer

Treasurer

Carl Gutschick

Principal, Gutschick, Little & Weber, P.A.

Secretary

Mary Grace Folwell

Associate General Counsel, District of Columbia Housing Authority

Danny Boyd

President, Boyd and Dowgiallo, P.A.

Larry Clark

President, Deerbrook Charitable Trust

Anne Hamel

Community Volunteer

Jim Humphrey

Chairman and CEO, The Humphrey Companies

Barbara Jackson

Senior Vice President, Branch Banking & Trust

Jenny Kottler

Community Volunteer

Renee Kremm

Owner, Windward Financial

David Mitchell

Community Volunteer

Cindy O'Neill

Community Volunteer

John A. Rosso, Jr.

Principal, Rosso Commercial Real Estate Services, LLC

Paul Serini, Esq.

Chairman, Helen J. Serini Foundation

Sonja Swygert

Community Volunteer

Trustees Emeriti

Carol Thompson

Community Volunteer

Dr. Lester Salamon

Director, Center for Civil Social Studies Institute for Policy Studies at Johns Hopkins University

Becki Kurdle

Community Volunteer

2017 Board Committees

Asset Management

Greg Strott, Committee Chair,
Board Member

Hank Libby, Board Member

Martha Blaxall, Community
Volunteer

Renee Kremm, Windward
Financial

Brad Long, Raymond James
Financial Services Advisors, Inc.

Stephen Holt, Premier
Planning Group

Budget & Finance

Carl Gutschick, Chair

Mary Grace Folwell

Barbara Jackson

David Mitchell

Sonja Swygert

Executive

Kathleen Brooks, Chair

Jim Nolan, Vice Chair

Sonja Swygert, Secretary

Greg Strott, Treasurer

Carl Gutschick, Asst. Treasurer

Governance & Nominating

Danny Boyd, Chair

Mary Grace Folwell

Becki Kurdle

Jim Nolan

Paul Serini

Strategic Planning

Patty Brown, Chair

Travis Gray

Becki Kurdle

Cindy O'Neill

Paul Serini



2017 Volunteer Committees

Anne Arundel Estate Planning Council

Renee Kremm, Committee Chair,
Windward Financial

Jason Powell, Program Chair,
Fidelity Investments

Danielle Cruttenden, McNamee
Hosea, Attorneys and Advisors

William Huffnell, Bay Point Wealth
Management

James Snyder, The Snyder Ervin
Group at Morgan Stanley

Stephen Holt, Premier
Planning Group

Kevin Burke, BB&T Wealth

Dave Hillery, HeimLantz, PC

Michael Lehr, Holden Campbell
Attorneys at Law

Celebration of Philanthropy

Holly Cole, Anne Arundel
Community College

Brenda Collins, Arts Council of
Anne Arundel County

Sarah Elder, Chesapeake Conservancy

JoAnne Maurer, Providence Center

Maggie Melson, Indian Creek School

Lisa Spallitta, Anne Arundel County
Volunteer Center

Grants4Teachers

Joe Van Deuren, Balanced Life Skills

Kevin Carter, Severn Bank

Marnie Blanchette, Community
Volunteer

Lana Keelty, Community Volunteer

Chuck Yocum, Anne Arundel
County Public Schools

Ladders to SUCCESS Economic Opportunity

Paul Serini, Board Member

Bettie Farrar, Community Volunteer

Greg Strott, Board Member

Kyle Murray, Chaney Enterprises

Ladders to SUCCESS Youth Development

Margo Cook, 1 North Wealth Services

Nicole D'Amore, Community
Volunteer

Jessica Morgenstern, Community
Volunteer

Sonja Swygert, Board Member



One Person

Danny's Fund

Margie Kosmerl, a local financial advisor, had been partnering with CFAAC professionally for years until one day her involvement became personal. Like far too many today, Margie's son Danny lost the battle with opioid addiction. It was in those early days, amidst the fog of grief and sorrow, that Margie set up a Donor Advised Fund to honor her son's life. Danny's Fund was established with one goal: to direct contributions towards purposes and causes that can help change the course of addiction.

Described as a happy, go-lucky kid, Danny grew up in Anne Arundel County. Danny had a passion for cooking and after graduating high school he took Hospitality and Culinary Arts classes at Anne Arundel Community College while working at several local restaurants. He eventually achieved his goal of becoming an Executive Chef at a Marriott Resorts property in Pompano Beach, Florida. Through the years, Danny's creativity and work ethic earned him many culinary achievements.

Danny's Fund is dedicated to helping others overcome the hardships associated with addiction, and if there's a tie-in to Danny's love of the culinary arts, all the better. A recent contribution from Danny's Fund was a gift made to The Light House Bistro in Annapolis. The Bistro helps provide a career path and jobs to those willing to do the work required to change their lives. Next time you stop into The Bistro, look for "Danny's Chair" facing the kitchen, with the inscription "In loving memory, Chef Daniel" on the back of the chair.

Margie says that giving through Danny's Fund helps her channel positive energy in her son's memory. "Sometimes we think we can't make a difference or we don't give ourselves enough credit to know what little steps can mean, but in my heart, I know otherwise. I might be able to do or say a little something that will inspire or encourage someone to take the next step in a positive direction," she says. Partnering with CFAAC has helped to turn tragedy into something meaningful.

OUR FAMILY GREW IN 2017!

New Funds in 2017

Annapolis Maritime Museum
Endowment Fund

Anne Arundel County
Public Library Foundation
Endowment

Anne Arundel County
Department of Aging

Anne Arundel County
Animal Control

Anne Arundel County Fire
Department

Anne Arundel County
General Use

Anne Arundel County
Department of Health

Anne Arundel County
Partnership for Children,
Youth and Families

Anne Arundel County Police
Department

Anne Arundel County
Recreation & Parks
Department

Anne Arundel County
Department of Social Services

Colleen and Lester Prosser Fund

Creston G. and Betty Jane
Tate Fund

FEDE Fund

Jessica and Bruce Morgenstern
Local Community Impact Fund

Jim and Linda Humphrey
Foundation

Lifting Anne Arundel
Giving Circle

CFAAC Funds

ANNE ARUNDEL COUNTY FUNDS

County funds allow donors to provide direct support to Anne Arundel County agencies, departments, programs, and projects.

Anne Arundel County Department of Aging

Anne Arundel County Animal Control

Anne Arundel County Fire Department

Anne Arundel County General Use

Anne Arundel County Department of Health

Anne Arundel County Partnership for Children, Youth and Families

Anne Arundel County Police Department

Anne Arundel County Recreation & Parks Department

Anne Arundel County Department of Social Services

CORPORATE ADVISED FUNDS

Corporate advised funds enable companies to support local charitable needs by effective seasonal budgeting, improved cash flow, and reduced administrative overhead.

Baum Jackson Investment Group Charitable Foundation

Core Legacy Fund

Gable Signs Foundation for a Brighter Future

Greenberg Gibbons/Reliable Foundation

Howard Bank Fund

Insurance Force Foundation

DESIGNATED & AGENCY FUNDS

Designated funds allow donors to name one or more specific organizations or agencies to benefit annually from the fund.

AAWGT Endowment Fund

Ames Fund for Financial Literacy and Health*

Anna E. Greenberg Leadership Fund

Annapolis Maritime Museum Endowment Fund

Anne Arundel County Public Library Foundation Endowment

Babe & Dick Chaney Memorial Endowment Fund

Beer Family Fund

Boy Scouts of Anne Arundel County

Catherine Weber Foundation*

Chrysalis House Endowment Fund
 Colonial Players Roland E. Riley Endowment
 for the Arts
 Community Leadership Fund for CFAAC Elling
 Foundation*
 Fund for Anne Arundel Conflict Resolution
 Healthy Anne Arundel
 Jane Campbell-Chambliss Legacy Trust*
 Langbein Family Endowment Fund
 Marcus Endowment Fund for Arundel Lodge
 Melanie and Michael Teems Fund* Perinatal
 Loss Fund
 Peter C. Chambliss Legacy Trust*
 Scenic Rivers Land Trust Stewardship Reserve
 Sylvia Meisenberg Adult Literacy Program
 at AHOH
 Sylvia Meisenberg Shakespeare
 Education Fund
 The Sunshine Fund - Supporting
 Grants 4 Teachers
 Tommy Yeager Endowment Fund
 Whaley Foundation*

DONOR ADVISED FUNDS

Donor-advised funds provide donors with a customized approach to philanthropic giving.

Agnes Dixon Fund
 Babe and Dick Chaney Memorial Fund Barry
 and Mary Gossett Foundation
 Beauty for Ashes*
 Beverly and Stephen Marcus Foundation Bird
 Family Fund
 Blaxall Fund for Economic Growth
 Blessings Fund

Bo DePaola Family Foundation
 Brooks Family Fund
 Carbaugh Family Foundation
 Carol Thompson Fund
 Carroll H. Hynson Foundation
 Chaney Fund for Hope
 Chaney Fund for Land Use Education
 Colleen and Lester Prosser Fund
 Creston G. and Betty Jane Tate Fund
 Crondall Fund
 Danny's Fund
 Deems Digital Foundation*
 Dick and Sabra Ladd Charitable Fund
 Elizabeth Carr Memorial Fund
 FEDE Fund
 Frank's Fund
 Franyo Fund
 Gibbs Family Foundation
 Greg & Susan Walker Family Foundation
 Gutschick Family Foundation*
 Haller Family Foundation
 Invictus Fund
 James and Susan Cox Legacy Fund*
 Jerry Aben Charitable Trust*
 Jessica and Bruce Morgenstern Local
 Community Impact Fund*
 Jim and Linda Humphrey Foundation
 John B. and Mary E. Slidell Family Charitable Fund
 Kincey and Bruce Potter Environmental Fund
 Kramer-Schaefer Fund
 Kurdle Family Fund
 Laurie Sharp Endowment Fund
 Lester M. and Lynda B. Salamon Charitable Fund
 Louis A. D'Camera Memorial Fund
 M&M Curtin Family Fund

CFAAC Funds continued

Magnolia Family Foundation
 Margaret Sander Chaires Foundation
 Mark and Lynne Powell Family Foundation
 Marston Family Foundation
 Patty Brown and Joe Gill Giving Fund*
 Peterman Ponatoski Family Foundation
 RK Family Fund
 Roger and Sherry Lepage Education Fund
 Sonja Swygert Family Fund
 Speciale Family Charitable Fund*
 Sullivan Family Charitable Fund*
 Thornton Family Fund
 Trish and Greg Strott Fund*
 Uhl Charitable Fund*
 Victor A. Sulin Charitable Fund
 Walk the Walk Community Fund
 Zoe Quinn Francis Fund

FIELD OF INTEREST FUNDS

Field of Interest funds allow donors to identify and support a broad charitable purpose or category of interest, such as the arts, education, human services, or a particular geographic area in the county.

Arts & Culture Anne Arundel
 Clendenning Clopp Family Foundation*
 Environment Anne Arundel
 Fund for Anne Arundel County
 Grants 4 Teachers Fund
 Help Our Neighbors Fund
 Live Well Anne Arundel
 South County Fund
 Strengthening Nonprofits Fund
 Women & Girls Fund of Anne Arundel County

GIVING CIRCLES

Giving Circles provide an opportunity for members to engage in philanthropy through collective giving.

Anne Arundel Women Giving Together
 Giving Circle

Lifting Anne Arundel Giving Circle

SCHOLARSHIP FUNDS

A scholarship is an award of financial aid for a student to further their education. Scholarships are awarded based upon various criteria which reflect the values and purposes of the donor of the award.

Colleen J. Stauffer Scholarship Fund*

Fred A. Stauffer Memorial Scholarship Fund*

Herzberg - Wild Scholarship Fund

Officer Grant Turner Memorial
 Scholarship Fund

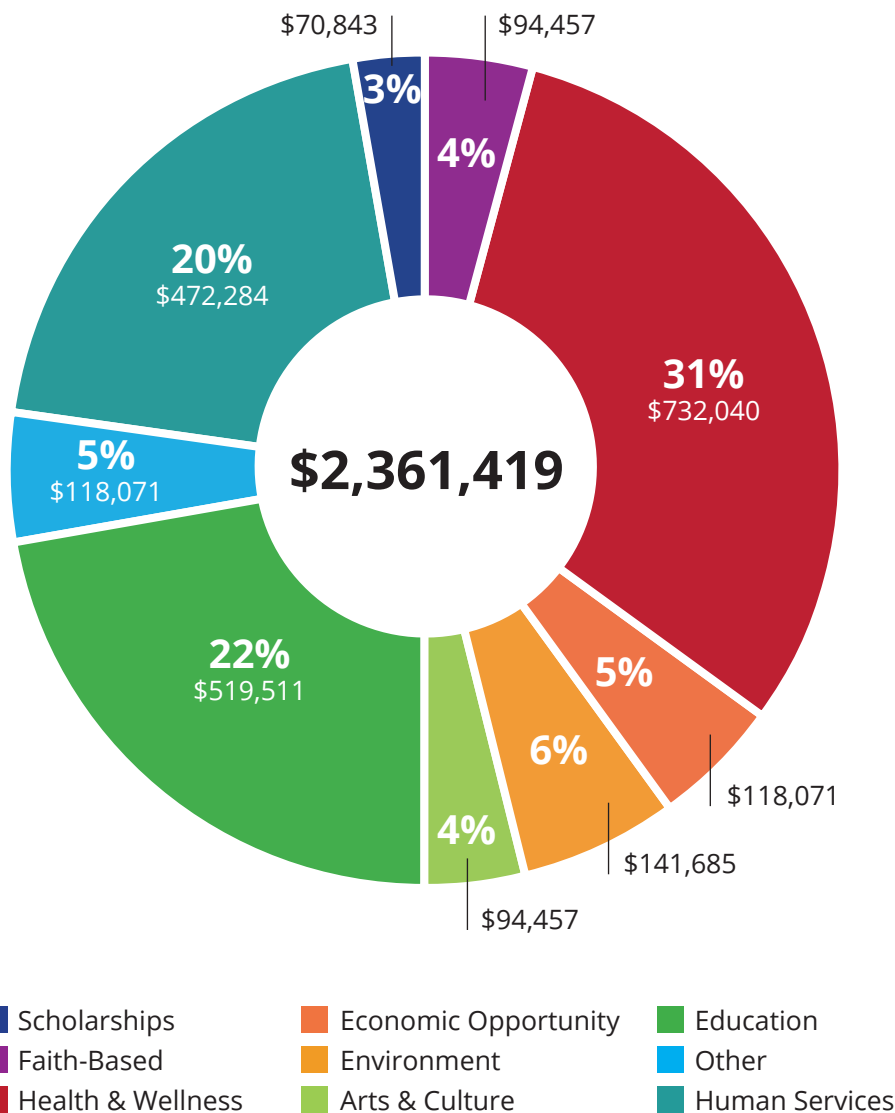
Alexandra Robinson Memorial
 Scholarship Fund*

Russell K. Robinson Memorial
 Scholarship Fund*

William Bunn Memorial Scholarship in
 Environmental Studies

**Legacy Intention*

2017 Grantmaking



DISCRETIONARY GRANTS

Discretionary Grants are funds awarded based on a competitive process. Each application is reviewed and selected by criteria established for the program.

43 grants
\$178,535

Grants 4 Teachers

Total Grants: \$5,749
15 schools

Help Our Neighbors

Total Grants: \$15,500
7 nonprofits

Ladders to SUCCESS

Total Grants: \$150,000
6 nonprofits

Strengthening Nonprofits

Total Grants: \$7,286
11 nonprofits

FUNDS AND SCHOLARSHIPS

Donor Advised | 219 Grants | **\$1,906,965**

Agency and Designated | 8 Grants | **\$26,019**

Scholarships | 14 Scholarships | **\$57,600**

GIVING CIRCLE

Anne Arundel Women Giving Together | 8 Grants | **\$111,729**

FIELD OF INTEREST

Arts & Culture | **\$25,000**

Environment | **\$40,000**



Grant Spotlight

Arts & Culture Anne Arundel Fund

Established in 2012 by a generous anonymous donor, the Arts & Culture Anne Arundel Fund was created to enhance the vibrancy and creativity of Anne Arundel County by offering access to arts and cultural activities for all residents. The Fund grew over time and in 2016, a group of donors came together to explore how to implement the vision for the Fund.

Driven by the belief that arts and culture are essential to transforming lives and increasing the quality of life across all ages, populations, and geographies, donors Tara Clifford, Beverly Marcus, Martha Blaxall, Melanie Teems, and Alpine and Don Bird started meeting monthly. Discussions ranged from providing nonprofits who offer arts and culture programs with direct service or operating grants, funding a county-wide awareness campaign, among other ideas. The funders were focused on having the greatest impact possible with their dollars. Melanie Teems introduced the possibility of helping to strengthen arts and culture nonprofits in the county through the Maryland Nonprofits Standards for Excellence Institute® and the Arts & Culture Standards for Excellence Cohort was born.

The Standards for Excellence Institute® is a national initiative established to promote the highest standards of ethics, effectiveness, and accountability in nonprofit governance, management, and operations. In 2017, in partnership with the Arts Council of Anne Arundel County, 11 nonprofits were selected to participate in an 18-month collaborative training program designed to help nonprofit organizations meet these high benchmarks: Annapolis Opera, Annapolis Arts District, Annapolis Film Festival, Annapolis Maritime Museum, Chesapeake Arts Center, Creative Performing Arts of South County, Encore Creativity for Older Adults, Maryland Federation of Art, Maryland Hall, Maryland Concert Series, and The Musical Autist.

It is anticipated that through a series of training sessions, coaching conference calls, and individual consulting, culminating in submission of a Standards for Excellence® application by the participating organization, that the cohort participants will experience increased sustainability and public trust, a strengthened board of directors, improved overall organizational effectiveness and efficiency, and the ability to provide more arts and culture program opportunities to Anne Arundel County residents.



Grant Spotlight

Environment Anne Arundel Fund

Fund Advisors Alpine and Don Bird, Beverly and Stephen Marcus, and Kinsey and Bruce Potter came together to determine how they could contribute to the restoration and protection of the Chesapeake Bay, local streams and rivers, and other natural areas. They had multiple discussions and asked many questions, including “Who can we partner with to increase our funding impact?”

CFAAC convened individual donors, private and public environmental foundations to explore potential collaborative funding opportunities. We learned that the Chesapeake Bay Trust (CBT), a nonprofit grantmaking organization dedicated to improving the natural resources of our region through environmental education, community engagement, and local watershed restoration, consistently receives more grant requests than it can fund.

CBT funds around 40 projects in Anne Arundel County each year. These projects engage over 3,000 students, hundreds of teachers, and over 1,000 volunteers in addition to installing valuable acres of wildlife habitat and stormwater best management practices. Statewide CBT’s grants engage hundreds of local businesses, many of them in Anne Arundel County, including restoration firms, engineering firms, bus companies, signage shops, and more.

The Fund Advisors saw an opportunity to supplement CBT’s requests and increase their philanthropic impact by partnering with the organization. In addition, CBT already had a well-established environmental grantmaking application and selection process.

The Fund Advisors decided to focus their giving on K-12 education and projects, community outreach, and restoration. Groups such as watershed organizations, community or homeowners’ associations, service and civic groups, faith-based organizations, and schools were encouraged to apply for funding. The following received grants from the Environment Anne Arundel Fund for a total of \$40,000. The first two were mini-grants for \$5,000 each and the following two were larger projects that were supplemented with grants of \$15,000 each.

- Meade Middle School for the Oyster Restoration and the Chesapeake Bay Watershed Project;
- Mary Moss at J. Albert Adams Academy for the College Creek Water Quality Improvement Project;
- South River Federation for CAT South Swale Retrofit Restoration; and,
- The Back Creek Conservancy for Cedar Ridge Stormwater Outreach and Restoration.



One Family



Marston Family Foundation Fund

Lee Marston's father was a preacher who instilled in him the practice of tithing and giving back to the community where one lives, works, and raises a family. Lee and his wife Sylvia have lived their entire lives following these giving principles. "It's in everyone's best interest to give. I truly believe that if every one of us gave back, even just a little, the world would be a better place. Starting right here in our own community," says Lee.

Lee visited the Severn River for the first time when he was only three months old. His grandparents had a farm on the river and Lee was fortunate to spend his summers growing up fishing and catching soft crabs. As a young man, Lee remembers the Severn River as being clean and clear. Lee's early career took him out west and after moving his family back to Anne Arundel County, he noticed the river he loved had changed. It was muddy, the grasses were disappearing, and the blue crabs were dying. Something had to be done and he wondered how he could make a difference. With this passion in mind, Lee became the first Treasurer of the Chesapeake Bay Foundation.

Establishing a Donor Advised Fund at CFAAC was the ideal way for Lee and Sylvia to build their family's philanthropic legacy. Every year, Lee and Sylvia's children and grandchildren are each allotted a specific amount from the Marston Family Foundation Fund for grantmaking. During the winter holidays the family gathers to discuss their individual philanthropic interests. The family's interests vary widely and include restoration of the Chesapeake Bay and its tributaries, AIDS awareness, education, food banks, gender identity and expression, and the healing arts.

Lee notes, "I just think it's important to do something to help what you love and what you believe in."

CFAAC Funds Supported 183 Nonprofits in 2017

Grantees

21st Century Education Foundation	Associated Catholic Charities, Inc.
Abundant Life Church	Avoca Museum
Accessible Resources for Independence	Bay Journal Media
ACCR - The Art Connection in the Capital Region	BirdsCaribbean
Agape Deliverance Ministries, Inc.	Box of Rain
Alliance for the Chesapeake Bay	Boy Scouts of America, B.A.C.
American Bird Conservancy	Boys and Girls Club of Annapolis and Anne Arundel County
American Cancer Society	Bright Minds Foundation
American Red Cross - Greater Chesapeake Region	Brooklyn Park Middle School
Annapolis Community Foundation	Building Better Days
Annapolis Film Festival, Inc.	Calvary United Methodist Church
Annapolis Green	Court-Appointed Special Advocate (CASA - Anne Arundel County)
Annapolis High School	Catholic Business Network of Washington DC
Annapolis Maritime Museum	Catholic Charities
Annapolis Opera	Catholic Charities-Archdiocese of Washington DC
Annapolis Symphony Orchestra	Center of Help, Inc. (Centro de Ayuda)
Anne Arundel Community College Foundation	Centerpoint Church
Anne Arundel County Food Bank	Central Middle School
Anne Arundel County Partnership for Children, Youth and Families	Central Union Mission
Anne Arundel County Public Library Foundation	Chesapeake Arts Center
Anne Arundel County Watershed Stewards Academy, Inc.	Chesapeake Bay Foundation
Anne Arundel Medical Center Foundation	Chesapeake Bay String of Pearls Project
Anti-Defamation League	Chesapeake Bay Trust
A-OK Mentoring Tutoring, Inc.	Chesapeake Legal Alliance, Inc.
Arc of Central Chesapeake Region	Chesapeake Shakespeare Company Theater
Arthritis Foundation	Chesapeake Conservancy
Arts Council of Anne Arundel County	Child's Play
Arundel House of Hope	Christian Community Service Center
Arundel Lodge, Inc.	College of Southern Maryland
Arundel Middle School	Colonial Players, Inc.
Asbury United Methodist Church	Columbia Festival of the Arts
Assistance League of the Chesapeake	Community Action Agency of Anne Arundel County
	Community Action Council of Howard County

Grantees

Community Foundation of Frederick County	Horizon Day Camp/Sunrise Association
Community Foundation of Southern Maryland	Hospice Cup
Community Unity	Hospice of the Chesapeake
Compass Rose Theater	Houston: reVision
Concerns for Police Survivors	Howard Community College Educational Foundation, Inc.
Cornell Lab of Ornithology	Howard Otway and Florence Otway Opportunity Project
Creating Communities	Humane Society of the United States
Creative and Performing Arts of South County	Illuminate the Journey, Inc.
Crofton Elementary School	International Justice Mission
Crystal Peaks Youth Ranch	Jill's House
DeCesaris/Prout Cancer Foundation	Johns Hopkins Sidney Kimel Comprehensive Cancer Center
Doctor's Community Hospital Foundation	Johns Hopkins University
Dr. James A Forrest Career and Technology Center	Key School
Eliot-Hine Middle School PTO	KIPP, Inc.
Emerson College	Kunta Kinte-Alex Haley Foundation, Inc.
Ferndale Early Education Center	Leadership Howard County, Inc.
First Baptist Church of Annapolis	Light House - Homeless Prevention Support Center
Food Link, Inc.	Living Classrooms Foundation
Fourth Presbyterian Church	Lothian Elementary School
Frederick Douglas Museum and Cultural Center, Inc.	Lowell School
Fresh Start Church	Magothy River Middle School
Friends of Arundel Seniors, Inc.	Maryland Association of Soil Conservation Districts
From Hand Out 2 Hand Up, Inc.	Maryland Farmers Market Association, Inc.
Fund for Educational Excellence	Maryland Federation of Art, Inc.
Georgetown East Elementary School	Maryland Nonprofits
Girls on the Run of the Greater Chesapeake	Maryland Therapeutic Riding, Inc.
Greater Houston Community Foundation	Mt. Vernon Lee Education Partnership
Grow Annapolis, Inc.	Muscular Dystrophy Association
Growth Action Network of Anne Arundel County	National Alliance on Mental Illness Anne Arundel County
Hebron-Harman Elementary School	National Capital Area Salvation Army
High Point Elementary	National MS Society/Greater DC-MD
Hole in the Wall Gang Fund, Inc.	North Glen Elementary School
HOPE for All	

Grantees

Odenton Elementary School	St. Jude Children's Research Hospital
Our Lady of Good Counsel High School	St. Mary's Parish
Oyster Recovery Partnership	St. Mary's Royal Blue Club
Piedmont Environmental Council	Star of Bethlehem Church of God in Christ
Planned Parenthood of MD	Start the Adventure in Reading (S.T.A.I.R. - Annapolis)
Pregnancy Clinic of Annapolis	Student Press Law Center
Romanian Christian Enterprises	Team Rubicon, USA
Salisbury University Foundation	Ted Stevens Foundation
Salvation Army	The Leukemia & Lymphoma Society Charlotte NC Chapter
Scenic Rivers Land Trust Stewardship Reserve	The Musical Autist
Scenic Rivers Land Trust, Inc.	This Is My Brave
Seeds 4 Success, Inc.	Trinity School at Meadow View
Severna Park Community Center	Trustees of the University of Pennsylvania
Simon Wiesenthal Center	University of Wisconsin Foundation
SME Foundation	VisionWorkshops
Smith Center for Healing and the Arts	We Care and Friends
Smithsonian Environmental Research Center	West Annapolis Elementary School
Society for the Prevention of Teen Suicide	West/Rhode Riverkeeper, Inc.
South Anne Arundel Lions Club	Wildfowl Trust of North America
South River Federation	Wildlife Land Trust
Southern Middle School	Women in Film and Video
Southern Poverty Law Center	Woods Memorial Presbyterian Church
Sozo Children	World Wildlife Fund
SPCA of Anne Arundel County	YMCA of Central Maryland, Inc.
St. Ann's Center for Children, Youth and Families	YWCA of Annapolis & Anne Arundel County
St. James Parish	Zaching Against Cancer Foundation
St. John's College High School	

Programs



Anne Arundel Estate Planning Council

The Anne Arundel Estate Planning Council (AAEPC) was created in 2012 by a group of tax, legal, insurance, and financial advisors to provide a forum for wealth planning professionals from various disciplines to exchange ideas and build relationships. In 2017, AAEPC held four quarterly educational events, and four networking events for advisors.

SPONSORS

GOLD

The Snyder-Ervin Group at Morgan Stanley

SILVER

Council, Baradel, Kosmerl & Nolan, P.A.

Fidelity Investments

HeimLantz, PC

Holden and Campbell Attorneys at Law

McGuire, McGuire & Linden, P.A.

McNamee Hosea Attorneys & Advisors

Mullen, Sondberg, Wimbish & Stone P.A.

Sinclair Prosser Law

Wells Fargo - The Private Bank

BRONZE

Bay Point Wealth Management

C.W. Rains & Associates

Fisher Law Office

Hyatt & Weber, P.A.

IKOR Advocacy and Life Management

Karen M. Whaley, CPA

Kullman CPA, LLC

Christine Hubbard Law

Maryland Capital Advisors

Michael K. Shelby, CPA

Premier Planning Group

Sandy Spring Trust

Windward Financial

Programs

Community Impact Speaker Series

CFAAC launched the Community Impact Speaker Series in 2017 with the aim to increase the awareness and knowledge of key issues impacting Anne Arundel County and to create the opportunity for dialogue for anyone interested in learning more. Topics covered were: volunteerism and civic engagement, community engagement in the public schools, the Community of Hope in North County, and the impact of incarceration on individuals and their families.

Pictured in the photo are Melissa Curtin, Executive Director, CFAAC; Belinda Fraley Huesman, Executive Director, Chesapeake Arts Center; Dr. Pamela Brown, Executive Director, Anne Arundel County Partnership for Children, Youth and Families. The organizations partnered for a presentation focused on the geography of poverty in the Northern area of the County; specifically hungry children, children impacted by incarceration, disconnected youth, and homeless youth.



Strengthening Nonprofits Collaborative

The Strengthening Nonprofits Collaborative (SNC) was formed in 2016 in an effort to leverage and align resources to better support skills development training for nonprofit professionals. Organizational, professional, and leadership development are not often easily accessible or affordable for nonprofit employees even though continuous learning is essential for greater organizational effectiveness, efficiency, quality program delivery, and sustainability.

In 2017, CFAAC hosted the second annual Anna E. Greenberg Board Leadership Training. There were 115 nonprofit staff and board members in attendance for an

engaging board governance workshop led by Eliot Pfanstiehl, CEO and Founder of Strathmore Hall Foundation, Inc., and Monica Jeffries Hazangeles, President, Strathmore Hall Foundation, Inc. In addition to the SNC, we also support nonprofits with our Strengthening Nonprofits Fund which provides grants to help strengthen organizations through professional and organizational development.

Each of the local SNC partners below provides a variety of training opportunities throughout the year to support nonprofits in Anne Arundel County:

- Arts Council of Anne Arundel County
- Anne Arundel County Public Library Finance Information Network
- Anne Arundel Community College Sarbanes Center for Public and Community Service

Community Leadership Circle

The Community Leadership Circle is made up of generous donors who have committed gifts to support CFAAC. In 2017, we set a **goal of raising \$175,000** for our Community Leadership Campaign. Thanks to our generous supporters, **we exceeded that goal and raised \$185,265!** Through CFAAC's Community Leadership Initiatives, we will continue to provide high-quality philanthropic services to our donors, serve the community as a thought partner, an advocate for local nonprofits, and a catalyst for new ideas and community problem-solving. Thank you for helping CFAAC make a long-term impact in Anne Arundel County!

Transform

\$50,000 - \$100,000

Patty Brown and Joe Gill*
Beverly and Stephen Marcus*
Deerbrook Charitable Trust

Invest

\$25,000 - \$49,999

The Saltworks Fund

Care

\$15,000 - \$24,999

Carol M. Jacobsohn Foundation
Chaney Foundation
Kathleen and Chauncey Brooks*
Anita and Carl Gutschick*
Trish and Greg Strott*

Commit

\$5,000 - \$14,999

Bee and Bud Billups*
Martha Blaxall*
Mary and Barry Gossett*
Helena Foundation,
Sylvia and James Earl
Nancy and Jim Nolan*
Angela and Ed Ponatoski
Susan and Greg Walker*
Karen Whaley*

Connect

\$1,000 - \$4,999

Anonymous Donor*
Steve Ames
Beer Family Fund*
Hamilton Chaney*
Anna E. Greenberg*
Carroll Hynson*
Elizabeth and Doug Kinney
Jenny and Bob Kottler
Richard Lerner
Barbara Tymkiw and Art Little
Mitchell Petersen Family
Foundation
Sue and Mike Pitchford
Mary and John Slidell
Raymond Streib
Victor Sulin*
Carol and Bill Thompson*
Wildwood Fund

Contribute

up to \$999

Betty and Martin Adkins
Anonymous Donor
Kris Bennet*
Patricia Barland
Florence Calvert
Vanessa Carter
Carol and David Cronin
Melissa Curtin
Linda Eggbeer
Susan and Joseph Gross
Chris Hubbard
The Judy Family Foundation
Amy Francis
Kay and Bill Franey
Karaline Kessler
Elizabeth and John Knupp
Helen Krone
Terri and Bill Kuethe
Bess and Eric Langbein
Patricia Lehman
David Lewis
Jennifer and James Lighthizer
Brad Long
Wendy and James McIntyre
Maggie and Vollie Melson
Taylor Milbradt
Gretchen Nyland
Jason Powell
Rick Powell
Caroline Purdy
Nancy Rase
Alt. Breeding Schwartz
Colleen and Fred Stauffer
Fred Sussman
Leslie Tilghman
Ann and Robert Whitcomb
Martha Yeager

*Multi-Year Gift



One Business

Chaney Enterprises Foundation Fund

Supporting the community has been a core tenet of Chaney Enterprises since Eugene “Babe” Chaney formed the company in 1962. Headquartered in Anne Arundel County, Chaney Enterprises is a ready-mix concrete, sand, gravel, stone, and related construction supply company. Frank Chaney, along with his brother Dicky, formed the Eugene Chaney Foundation, Ltd. in 1987 in honor of their father to give grants in the areas where the company does business and where the Chaney families and company employees live.



After managing the corporate foundation for over 30 years, Chaney Enterprises decided to spend less time on the day-to-day management and administrative activities of a foundation. The Foundation's Board of Directors determined that partnering with CFAAC through a Corporate Advised Fund would be a more efficient and effective approach to managing their philanthropy and would help them to better meet their corporate giving goals.

“Philanthropy is about getting involved in the community, knowing where the needs are, and responding by giving your time and resources. Establishing a Corporate Advised Fund at CFAAC has provided a great opportunity for our business to help local nonprofits thrive and provide important services for all of us,” says Hall Chaney, President of Chaney Enterprises, and Foundation Director. “We encourage our employees to volunteer and give their time and skills to causes they care about.”

The Chaney Enterprises Foundation Fund's mission is *to make a concrete contribution to positively affect the well-being of the communities we serve by investing human and financial resources...because we believe it's the right thing to do.* Grants are given in the communities that align with the company's market footprint and focus on workforce development, workplace safety, the environment, education, health, and arts and culture.

“Through our partnership with CFAAC, Chaney Enterprises is proud to be investing in the communities where we do business through grants to nonprofits from our Fund, sponsorships, and in-kind contributions,” says Frank Chaney, Chairman of the Board, Chaney Enterprises and President, Chaney Foundation, Ltd.

Since the partnership began, Chaney Enterprises Foundation Fund has given more than \$1.3 million dollars in grants to Anne Arundel County nonprofits including: Anne Arundel County Public Schools, Anne Arundel Community College, Anne Arundel Medical Center, Anne Arundel County Public Library Foundation, Strong Schools Maryland Campaign, Smithsonian Environmental Research Center, and to national organizations like the American Cancer Society.



2017 Philanthropists of the Year
Jane Campbell-Chambliss
and **Peter Chambliss**



2017 Corporate Philanthropist
of the Year
**Buck Distributing Company,
Inc., Elizabeth "Betty" Buck**



2017 Volunteers of the Year
Karen Feldman and
Helena Hunter



2017 Young Volunteer of the Year
Jason Cherry

Celebration of Philanthropy

The Community Foundation of Anne Arundel County proudly hosted the 17th Annual Celebration of Philanthropy Awards Luncheon. The luncheon celebrates philanthropy in our community and the individuals, businesses and foundations who demonstrate outstanding generosity and community leadership. The Volunteer and Youth Volunteer awards were presented in partnership with the Anne Arundel County Volunteer Center. Pictured in the photos, along with the awardees, are Melissa Curtin, President & CEO, Community Foundation of Anne Arundel County and Lisa Spallitta, Executive Director, Anne Arundel County Volunteer Center.

2017 Sponsors

PLATINUM

Anne Arundel Medical
Center Foundation
M&T Bank
PNC Bank

GOLD

Anne Arundel Dermatology
Anne Arundel Public
Library Foundation
Anne Arundel County
Volunteer Center
Chaney Enterprises
Council, Baradel, Kosmerl &
Nolan, P.A.
Historic Annapolis Foundation
David R. Lewis Foundation
Helen J. Serini Foundation
Severn Bank

SILVER SPONSORS

Bello Machre
Kathy and Chauncey Brooks
Deerbrook Charitable Trust
Due East Partners
Howard Bank
Linda and James Humphrey
Johns Hopkins Healthcare, LLC
Mason Investment Advisory
Services, Inc.
Sinclair Prosser Law, LLC
SFP Capital Partners, LLC

BRONZE SPONSORS

Anne Arundel Community
College Foundation
Baltimore Washington Medical
Center Foundation
Boatyard Bar & Grill
Becki Kurdle and Danny Boyd
Melissa and Mike Curtin
Anita and Carl Gutschick
Barbara and Glenn Jackson
Kim and David Mitchell
Pregnancy Clinic
Trish and Greg Strott
Sonja Swygert
Karen M. Whaley, CPA

Financials

Combined Statement of Financial Position

12/31/2017* unaudited

12/31/2016

Assets

Cash and Cash Equivalents	\$468,762	\$463,943
Contributions Receivable	\$300,362	\$1,452,966
Investments	\$9,566,004	\$6,122,926
Other Assets	\$4,204,728	\$4,799,522
Total Assets	\$14,539,856	\$12,839,357

Liabilities and Net Assets

Liabilities	\$23,190	\$23,457
Agency Funds	\$584,878	\$498,827
Net Assets	\$13,931,788	\$12,317,073
Total Liabilities and Net Assets	\$14,539,856	\$12,839,357

Combined Statement of Activities

Support and Revenues

Contributions	\$3,985,841	\$6,886,243
Special Events (Net)	\$111,171	\$137,687
Investment Income	\$808,911	\$546,853
Total Support and Revenues	\$4,905,923	\$7,570,783

Grants and Expenses

Grants and Charitable Expenditures	\$2,463,846	\$1,911,990
Operating and Other Expenses	\$299,468	\$271,807
Total Grants and Expenses	\$2,763,314	\$2,183,797

Change in Net Assets	\$2,142,609	\$5,386,986
Reclass Agency Fund as Liabilities	\$ -	\$(498,827)
Beginning Net Assets	\$12,317,073	\$7,428,914
Ending Net Assets	\$14,459,682	\$12,317,073

Ways to Give

Options for making your tax-deductible gift.

Stock Transfer

To make a stock transfer, please use the following information:

TD Ameritrade, Inc. Depository Trust Company (DTC) # 0188

For the Credit to TD Ameritrade Account # 937027416

Account Name: Community Foundation of Anne Arundel County - HA

Check

Please make your check payable to the Community Foundation of Anne Arundel County and include the name of the fund to which you are donating in the memo line. **Mail your check to:**

914 Bay Ridge Road, Suite 220
Annapolis, MD 21403

Wire Transfer

To make a wire transfer, **please disburse the gift amount to:**

First National Bank of Omaha
16th Dodge Streets
Omaha, NE 68102

A/C of TD Ameritrade, Inc.

ABA # 104000016

A/C # 16424641

For credit to: Community Foundation of Anne Arundel County

Account Number: 937027416

Credit Card

You can make a gift to any of CFAAC's funds by making a secure credit card donation online, or call us at 410.280.1102 to provide your credit card information over the phone.

Charitable IRA Rollover

If you are 70 1/2 or older, the Charitable IRA Rollover provides a unique opportunity to use retirement plan assets to make a significant gift to a qualified nonprofit organization with no tax on the withdrawal. To learn more contact us at 410.280.1102.

Endow Maryland

A Maryland state tax credit called Endow Maryland rewards donors who help build permanent charitable funds for local communities across the state and right here in Anne Arundel County. Endow Maryland offers **a tax credit for gifts from \$500 - \$50,000** to permanent, endowed funds at qualified community foundations in Maryland.

Medallion Program

We offer several investment options to our donors including the opportunity to establish Donor Advised Funds at CFAAC **while having a qualified advisor continue to manage your assets and receive investment management fees.**

Planned Gifts

Leave a Legacy

There are many ways to make a planned gift or bequest to CFAAC. To learn more contact us at 410.280.1102.

Our



Pictured left to right:

Taylor Milbradt, Director, Finance & Operations

Karaline Kessler, Coordinator, Marketing & Communications

Melissa Curtin, President & CEO

Amy Francis, Director, Development

Jan Hoffberger, Manager, Grants & Scholarships



914 Bay Ridge Road, Suite 220
Annapolis, Maryland 21403
www.cfaac.org | 410.280.1102